

Price-Based Adaptive Spinning Reserve Requirements in Power System Scheduling

Chung-Li Tseng*, Shmuel S. Oren*, Alva J. Svoboda[†], Raymond B. Johnson[†]

April 14, 1998

Abstract

In a deregulated electricity market such as the California WEPEX, spinning reserves must be explicitly identified as an ancillary service and priced. Additionally, scheduling coordinators who match suppliers and demands may either self-provide spinning reserves, or rely on the Independent System Operator (ISO) to provide reserves at the spot price. The deregulated market structure makes explicit the implicit softness that has always been recognized in the reserve constraints: additional reserves may have value even when a minimum reserve requirement has been met. In this paper we formulate the spinning reserve requirement (SRR) as a function of the endogenously determined marginal values of reserves. The spinning reserve requirement depends, according to a nonincreasing response function, on a price/value signal. We present three power system scheduling algorithms in which this price/value signal is updated at each iteration of a dual optimization. Game theory is used to interpret the proposed algorithms. Numerical test results are also presented.

Keywords: Power system scheduling, unit commitment, game theory

1 Introduction

The solution of power system scheduling problems is essential to a power utility like PG&E for major unit commitment and transaction decisions. Many optimization methods have been proposed to solve this problem [3]. Among them, Lagrangian

*Dept. of Industrial Engineering & Operations Research, University of California, Berkeley, CA 94720

[†]Pacific Gas & Electric Company, San Francisco, CA 94177. The authors remain solely responsible for the errors in this paper. This paper does not represent the views of PG&E or its members.

relaxation methods are now widely used approaches to solve unit commitment [2, 4, 7]. At PG&E, the Hydro-Thermal Optimization (HTO) program was developed almost a decade ago based on the Lagrangian relaxation approach [4]. In our recent works, the Lagrangian relaxation-based algorithm has been extended to schedule thermal units under ramp rate constraints [11] and transmission constraints [14].

The objective of the unit commitment is to minimize the total generating costs of the power system over the planning horizon subject to system constraints (e.g. load balance constraints and spinning reserve constraints) and unit constraints (e.g. minimum up/down time constraints and ramp constraints.) Most of the unit constraints describe the physical limits of generation units and should not be violated.

In contrast to these ‘hard’ constraints, the spinning reserve constraints are ‘soft,’ both in the sense that they do not represent actual physical limits (normally they are determined by regulation or law), and in the sense that there may be value-added in exceeding the set level. A deregulated electricity market structure makes explicit the implicit softness that has always been recognized in the reserve constraints. In the deregulated electricity market proposed in California, spinning reserve has been explicitly identified as an ancillary service that will be priced. Additionally, coordinators who match suppliers and demands (in California, for example, the Power Exchange which will initially be responsible for matching most current utility-owned generation and load) may either self-provide spinning reserves or rely on the independent system operator (ISO), who conducts an auction to provide a spot price for reserves.

The softness of the reserve constraints has previously been dealt with using fuzzy logic techniques [6]. In [6], Guan et al. proposed an efficient fuzzy optimization-based method to solve the unit commitment problem with soft reserve requirements. They first convert the problem to a ‘crisp’ one, then take advantage of separability of the problem and solve it by Lagrangian relaxation. They also show the trade-off between cost-minimization and system reserve satisfaction. However, to avoid infeasibility, the aspiration level of the generation cost is obtained by running the crisp problem with the lowest acceptable reserve requirement. This requires multiple runs of the unit commitment algorithm.

Hourly spinning reserve requirements are usually defined to be the greater of a fixed percentage of total forecast demand and the largest on-line unit. A utility or scheduling coordinator may however wish to increase the SRR to a higher level, provided the additional reserves do not cost too much. In this situation, the unit commitment program as usually formulated would probably first be run with the higher SRR. If the marginal cost of reserves at that level were too high, or no feasible

commitment satisfying the requirement could be found, the operator would run the program again with a lower requirement, though still greater than or equal to the minimum reserve requirement defined by statute or scheduling protocol. Such a trial and error approach requires multiple runs of the unit commitment program and is time-consuming.

In this paper, we propose a new approach embedded in the Lagrangian relaxation approach. The SRR is defined as adaptive and adjustable between two levels of reserve requirement in all hours. The SRR is adjusted based on the corresponding Lagrange multiplier, which is viewed as price information. Game theory is used to interpret our proposed algorithms. The method proposed in this paper does not require the multiple runs of unit commitment required by other approaches.

We present a formulation of the thermal unit commitment problem in Section 2. In Section 3 after a brief review of the Lagrangian relaxation formulation, we interpret this formulation by a two-firm model, from which the adaptive price-based SRR is derived. A three-phase algorithm is then presented in Section 4 to solve the unit commitment problem with the adaptive SRR. Numerical test results and conclusions are given in Sections 5 and 6.

2 Problem formulation

In this paper the following standard notation will be used. Additional symbols will be introduced when necessary.

i : index for the number of units ($i = 1, \dots, I$)

t : index for time ($t = 0, \dots, T$)

u_{it} : zero-one decision variable indicating whether unit i is up or down in time period t

x_{it} : state variable indicating the length of time that unit i has been up or down in time period t

t_i^{on} : the minimum number of periods unit i must remain on after it has been turned on

t_i^{off} : the minimum number of periods unit i must remain off after it has been turned off

p_{it} : state variable indicating the amount of power unit i is generating in time period t

p_i^{min} : minimum rated capacity of unit i

p_i^{\max} : maximum rated capacity of unit i

r_i^{\max} : maximum reserve for unit i

$r_i(p_{it})$: reserve available from unit i in time period t ($= \min(r_i^{\max}, p_i^{\max} - p_{it})$)

$C_i(p_{it})$: fuel cost for operating unit i at output level p_{it} in time period t

$S_i(x_{i,t-1}, u_{it}, u_{i,t-1})$: startup cost associated with turning on unit i at the beginning of time period t

D_t : forecast demand requirement in time period t

R_t : spinning reserve requirement (SRR) in time period t

The unit commitment problem is formulated as the following mixed-integer programming problem: (note that the underlined variables are vectors in this paper, e.g. $\underline{u} = (u_{11}, \dots, u_{IT})$.)

$$(P) \min_{\underline{u}, \underline{x}, \underline{p}} \sum_{t=1}^T \sum_{i=1}^I [C_i(p_{it})u_{it} + S_i(x_{i,t-1}, u_{it}, u_{i,t-1})] \quad (1)$$

subject to the demand constraints,

$$\sum_{i=1}^I p_{it}u_{it} = D_t, \quad t = 1, \dots, T, \quad (2)$$

and the spinning reserve constraints,

$$\sum_{i=1}^I r_i(p_{it})u_{it} \geq R_t, \quad t = 1, \dots, T. \quad (3)$$

There are other unit constraints such as unit capacity constraints,

$$p_i^{\min} \leq p_{it} \leq p_i^{\max}, \quad i = 1, \dots, I; \quad t = 1, \dots, T, \quad (4)$$

the state transition equation for $i = 1, \dots, I$,

$$x_{it} = \begin{cases} \max(x_{i,t-1}, 0) + 1, & \text{if } u_{it} = 1, \\ \min(x_{i,t-1}, 0) - 1, & \text{if } u_{it} = 0, \end{cases} \quad (5)$$

the minimum up/down time constraints for $i = 1, \dots, I$,

$$u_{it} = \begin{cases} 1, & \text{if } 1 \leq x_{i,t-1} < t_i^{\text{on}}, \\ 0, & \text{if } -1 \geq x_{i,t-1} > -t_i^{\text{off}}, \\ 0 \text{ or } 1, & \text{otherwise,} \end{cases} \quad (6)$$

and the initial conditions on x_{it} at $t = 0$ for $\forall i$.

3 Two-firm model

The method proposed in this paper is embedded in the Lagrangian relaxation approach. In this section, we will use a two-firm model to interpret this approach. The Lagrangian relaxation approach relaxes the demand constraints and the spinning reserve constraints by using Lagrange multipliers. The problem is then decomposed into I subproblems. Let λ_t and μ_t ($t = 1, \dots, T$) be the corresponding nonnegative Lagrange multipliers to (2) and (3). We have the following dual problem:

$$(D) \quad \max_{\underline{\lambda}, \underline{\mu} \geq 0} d(\underline{\lambda}, \underline{\mu}; \underline{R}), \quad (7)$$

where

$$d(\underline{\lambda}, \underline{\mu}; \underline{R}) = \sum_{i=1}^I d_i(\underline{\lambda}, \underline{\mu}) + \sum_{t=1}^T (\lambda_t D_t + \mu_t R_t), \quad (8)$$

and

$$d_i(\underline{\lambda}, \underline{\mu}) = \min_{\underline{u}, \underline{x}, \underline{p}} \sum_{t=1}^T [C_i(p_{it})u_{it} + S_i(x_{i,t-1}, u_{it}, u_{i,t-1}) - \lambda_t p_{it} u_{it} - \mu_t r_i(p_{it})u_{it}]. \quad (9)$$

3.1 Two-firm model with fixed SRR

Each unit subproblem d_i can be interpreted as a profit maximization problem for unit i [9, 10], where unit i is an endogenously priced resource and λ_t and μ_t are the prices paid to the resource.

We interpret the dual optimization using the following two-firm model: Firm P, a power utility, facing demand D_t needs to purchase fuel from firm Q for generation. Fuel for different generating units may vary and fuel cost is described by $C_i(\cdot)$. Firm Q also sells power and spinning reserves. It offers firm P the prices λ_t and μ_t for power and spinning reserves at hour t respectively. Firm P's objective is to minimize its total cost given two options: buy fuel and self-generate or directly buy power from firm Q. Firm Q's problem is to adjust the prices of λ_t and μ_t so as to achieve its maximum revenue, considering that customer firm P will minimize its cost.

Remarks:

1. In Figure 1 the dual objective function is divided into two optimization problems of two firms. If firm P decides to purchase fuel, its spending is captured by the two terms in the first bracket in the objective function. If firm P purchases either power or spinning capacity from firm Q, it pays the corresponding amounts in the second bracket. No matter what option firm P chooses, firm Q collects the money.

$$\max_{\underline{\lambda}, \underline{\mu} \geq 0} \min_{\underline{u}, \underline{x}, \underline{p}} \left(\begin{array}{l} \sum_{t=1}^T \sum_{i=1}^I [C_i(p_{it})u_{it} + S_i(x_{i,t-1}, u_{it}, u_{i,t-1})] + \\ \sum_{t=1}^T [\lambda_t(D_t - \sum_{i=1}^I p_{it}u_{it}) + \mu_t(R_t - \sum_{i=1}^I r_i(p_{it})u_{it})] \end{array} \right)$$

Firm P's cost minimization problem

Firm Q's revenue maximization problem

Figure 1: The two-firm model

2. At iteration k , firm Q offers λ_t^k and μ_t^k , and firm P obtains p_{it}^k , u_{it}^k . If the subgradient $(D_t - \sum_{i=1}^I p_{it}^k u_{it}^k) > 0$, λ_t^k should be increased at the next iteration. From firm Q's perspective if $(D_t - \sum_{i=1}^I p_{it}^k u_{it}^k) > 0$ there is an excess demand for power, and firm Q could raise the price.
3. Raising λ_t would stimulate the system to increase total generation at hour t and vice versa. Increasing μ_t would at some point make more units turn on. Changing either λ_t or μ_t would affect spinning reserve, but it can be shown that the amount of spinning reserve only depends on $\lambda_t - \mu_t$.

This two-firm model can be treated as a 2-player game. Consider a sequential bargaining game of complete and perfect information in which firm Q (player 1) moves first and decides prices λ_t and μ_t ($t = 1, \dots, T$); firm P (player 2) observes λ_t and μ_t ($t = 1, \dots, T$), and then chooses its optimal generating policy, (u_{it}, x_{it}, p_{it}) , $\forall i, t$. We have the following proposition.

Proposition 1 If $(\underline{\lambda}^*, \underline{\mu}^*; \underline{u}^*, \underline{p}^*)$ is the solution to (D) , it is a Nash equilibrium ([5]) of the above game.

Proof. The solution to (D) is a Nash equilibrium because given the other player's strategy, each player has no incentive to deviate: given firm P's strategy $(\underline{u}^*, \underline{p}^*)$, firm Q has no incentive to deviate from $(\underline{\lambda}^*, \underline{\mu}^*)$, since these prices maximize its revenue d which is a concave function. Similarly, given firm Q's strategy $(\underline{\lambda}^*, \underline{\mu}^*)$, $(\underline{u}^*, \underline{p}^*)$ is the best strategy for firm P, since $(\underline{u}^*, \underline{p}^*)$ minimizes $d(\underline{\lambda}^*, \underline{\mu}^*)$. ■

Note that the result of Proposition 1 holds if the game is a simultaneous-move game. However, a sequential game with no need to assume that firm P, a spinning reserve provider, has market power fits reality better than the model of a simultaneous-move game. The subgradient algorithm therefore can be regarded as an interpretation of how each firm adjusts its decision in the face of the other firm's choice. The se-

quences, $\{(\underline{\lambda}^k, \underline{\mu}^k)\}$ and $\{(\underline{u}^k, \underline{p}^k)\}$, describe a process of adjustment to equilibrium.

3.2 Price-based adaptive SRR

In a deregulated electricity market like the one proposed in California, spinning reserve is obtained and priced as an ancillary service. The ISO has ultimate responsibility for meeting the reserve requirements based on predetermined operating guidelines. Scheduling coordinators have the option to provide some or all of their reserve requirements. If they do not self-provide, the ISO will do so at the spot price. A coordinator thus faces the problems of estimating the value (or opportunity cost) of reserves, and then of deciding on its levels of self-provision of reserves, and whether to bid into the reserve auction, based on this value. In this paper, we propose a scheme for obtaining an optimal level of spinning reserves at or above a minimum requirement, on the assumption that additional reserves have value in at least some hours. The flexible SRR avoids uneconomic solutions in which expensive units are unnecessarily committed, and also avoids cases in which requiring desired higher levels of reserves would result in the program not finding a feasible unit commitment. These phenomena both tend to be indicated by high values of the multipliers on spinning reserves. A flexible SRR which is formulated as a function of an iteratively determined value of reserves can therefore also be used to improve tradeoffs between optimality and feasibility in the unit commitment solution.

We now modify the two-firm model defined in Section 3.1. Let firm P now also select its SRR. Firm Q, as in the original model offers prices $\underline{\lambda}$ and $\underline{\mu}$. After observing the prices $\underline{\lambda}$ and $\underline{\mu}$, firm P defines its SRR first, then solves the corresponding optimal generating policy, $\{u_{it}, p_{it}\}$ for all i, t . We assume that R_t is selected based on a function of μ_t in the form $\theta(\mu_t)D_t$, where $\theta : \mathbb{R}^+ \rightarrow [a_t, b_t]$ is a monotone nonincreasing function. For simplicity, we denote it as $R_t(\mu_t)$. $R_t(\cdot)$ is called the *response function* of firm P. This means that when μ_t , the price of spinning capacity offered by Q, is high, firm P not only tends to commit more units (as in the original model) but also wants to lower its SRR, and vice versa. An example of $R_t(\mu_t)$ is depicted in Figure 2, where $R_t(\mu_t) = [(b_t + a_t)/2 + (b_t - a_t)/2 \cdot \tanh(-\beta(\mu_t - \alpha))]D_t$, $\alpha > 0$, $\beta > 0$.

In this extended two-firm model, the SRR is driven by price through a response function. This corresponds to a variation of the dual problem (D). We will present the formulation along with the solution procedure in the following section.

4 The solution procedure

Despite the efficiency of solving (D) due to its separability, the solution of (D) does not necessarily yield a feasible solution to (P) , i.e. satisfying (2) and (3). Lagrangian relaxation algorithms for solving unit commitment have often been implemented with two phases: a dual optimization phase and a feasibility phase. In [13], a three-phase structure of algorithm for solving unit commitment problem is proposed as follows.

Phase 1: Dual optimization, i.e., solving (D) .

Phase 2: Feasibility phase: to obtain a feasible schedule.

Phase 3: Unit decommitment phase.

In the following sections, we will first briefly review the three-phase algorithm for solving the unit commitment with fixed SRR. With little modification, the three-phase algorithm is extended to handle the case with flexible SRR.

4.1 Three-phase algorithm with fixed SRR

It is well known that the dual objective function d is concave and continuous but not necessarily differentiable at all points. A subgradient algorithm is applied to solve the dual problem (D) . It can be shown that the vector of the mismatches in the demand constraints and the spinning reserve constraints is a subgradient of the dual objective function d ([1]).

Phase 1: The subgradient algorithm

Step 0: $k \leftarrow 0$; $\underline{\lambda}^0$ and $\underline{\mu}^0$ are given.

Step 1: If stopping criteria are met, stop. Otherwise solve $d(\underline{\lambda}^k, \underline{\mu}^k; \underline{R})$ to obtain $(\underline{u}^k, \underline{p}^k)$.

Step 2: $\lambda_t^{k+1} = \lambda_t^k + s^k(D_t - \sum_{i=1}^I p_{it}^k u_{it}^k)$,
 $\mu_t^{k+1} = \max(0, \mu_t^k + s^k(R_t - \sum_{i=1}^I r_i(p_{it}^k)u_{it}^k)), \forall t$.

Step 3: $k \leftarrow k + 1$, go to Step 1. ■

In [8], it is shown that under some conditions on the step size s^k , the subgradient algorithm converges. The stopping criteria used in our implementation include the maximum number of iterations, the change of norm of subgradients at two consecutive iterations and the number of iterations without improvement in the dual objective value.

In the Phase 2 proposed in [15], the hour of the most-violated SRR is determined, and the corresponding μ_t is enhanced. A method is proposed to calculate the exact amount of the increase in the value of the corresponding μ_t to make SRR satisfied at the corresponding hour. However, this method seems to take a long time for locating a feasible solution because only one μ_t is updated at a time. A natural extension is to simultaneously update at each iteration the μ_t corresponding to *all* the hours that the SRR is violated [4, 13]. This speeds up the feasibility phase at a cost of possible overcommitment in the generating units [13]. Under the structure of the three-phase algorithm, this overcommitment can be corrected in the unit decommitment phase to be discussed later. Although these Phase 2 methods were all designed for the case where spinning *capacity* constraints of the form below:

$$\sum_{i=1}^I p_i^{\max} u_{it} \geq D_t + R_t, \forall t, \quad (10)$$

the basic idea behind them can actually be applied to the reserve constraints of the form in (3).

The purpose of a Phase 2 algorithm is to obtain a feasible solution, or equivalently, a *dispatchable* commitment. We first examine the conditions of existence of a dispatchable commitment. Given a commitment $\{\tilde{u}_{it}\}$, it is dispatchable *if and only if* the following conditions hold for $\forall t$.

$$\sum_{i=1}^I p_i^{\min} \tilde{u}_{it} \leq D_t \leq \sum_{i=1}^I p_i^{\max} \tilde{u}_{it}, \quad (11a)$$

$$\sum_{i=1}^I r_i^{\max} \tilde{u}_{it} \geq R_t, \quad (11b)$$

and

$$\sum_{i=1}^I p_i^{\max} \tilde{u}_{it} \geq D_t + R_t. \quad (11c)$$

The proof of the existence conditions above is straightforward and is omitted here. It can be seen that the existence of a solution requires the satisfaction of sufficiency of both (system) spinning capability, (11a) and (11b), and reserve capability (11c). We now introduce our Phase 2 algorithm.

Phase 2: Feasibility algorithm

Step 0: $k \leftarrow 0$; $\underline{\lambda}^0$ and $\underline{\mu}^0$ are from Phase 1.

Step 1: Given $\underline{\lambda}^k$ and $\underline{\mu}^k$, solve $d(\underline{\lambda}^k, \underline{\mu}^k; \underline{R})$ to obtain $(\underline{u}^k, \underline{p}^k)$.

Step 2: If the existence conditions (11a) to (11c), applied to $\{u_{it}^k\}$, are satisfied, stop and $\{u_{it}^k\}$ is dispatchable.

Step 3: $\lambda_t^{k+1} = \lambda_t^k$,
 $\mu_t^{k+1} = \mu_t^k + s^k \cdot \Delta\mu_t^k$, $\Delta\mu_t^k > 0$ for $\forall t$ violating the existence conditions (11a) to (11c), applied to $\{u_{it}^k\}$.

Step 4: $k \leftarrow k + 1$, go to Step 1. ■

In Step 2 of the algorithm above, for the hours with insufficient (system) spinning or reserve capability, the corresponding μ_t are enhanced by $\Delta\mu_t^k$. This, based on our two-firm interpretation, will induce more unit commitment.

A unit decommitment method has been developed as a post-processing phase (Phase 3) for the algorithms for solving the unit commitment problem. Given a feasible unit commitment (\tilde{u}, \tilde{p}) , the unit decommitment method improves the solution while maintaining feasibility. In [12] it is shown that the unit decommitment method not only improves solution quality generally, but also mitigates unpredictable effects due to heuristics in the first two phases. The interested reader can refer to [12, 13] for detailed discussion.

4.2 Three-phase algorithm with adaptive SRR

In Section 3.2, the concept of price-based adaptive SRR is introduced. This flexible SRR of firm P is captured by a response function $R_t(\cdot)$ at time t . Depending on whether firm Q knows the response function of firm P, firm Q's decision for price adjustment varies. This creates two variations of the dual problem (D), Nash-type and Stackelberg-type two-firm models, to be discussed next.

4.2.1 Sequential bargaining game model

Consider a sequential bargaining game of complete and perfect information in which firm Q moves first and firm P moves second. The timing of the game is as follows: (1) firm Q chooses the prices λ_t and μ_t , for all t ; (2) firm P observes λ_t and μ_t , and then chooses its SRR and the corresponding optimal generating policy, u_{it} and p_{it} . Assume the scenario is common knowledge to both firms P and Q, but firm Q does not know the response function of firm P. In the sequel, we use the notation $\underline{R}(\underline{\mu}) = (R_1(\mu_1), \dots, R_T(\mu_T))$.

Proposition 2 If $(\underline{\lambda}^*, \underline{\mu}^*; \underline{u}^*, \underline{p}^*)$ is a solution to the following problem (D^*), then

$(\underline{\lambda}^*, \underline{\mu}^*; \underline{R}(\underline{\mu}^*), \underline{u}^*, \underline{p}^*)$ is a Nash equilibrium of the sequential bargaining game.

$$(D^*) \max_{\underline{\lambda}, \underline{\mu} \geq 0} \left(\begin{array}{l} \min_{\underline{u}, \underline{x}, \underline{p}} \sum_{t=1}^T \sum_{i=1}^I [C_i(p_{it})u_{it} + S_i(x_{i,t-1}, u_{it}, u_{i,t-1})] + \\ \sum_{t=1}^T [\lambda_t(D_t - \sum_{i=1}^I p_{it}u_{it}) + \mu_t(R_t^* - \sum_{i=1}^I r_i(p_{it})u_{it})] \\ \text{subject to } R_t^* = R_t(\mu_t^*). \end{array} \right) \quad (12)$$

■

To find a Nash equilibrium, we construct an algorithm to simulate the process of adjustment toward equilibrium. At each iteration, as in the subgradient algorithm, firm Q adjusts prices based on the law of supply and firm P minimizes its cost. Also firm P updates its SRR in response to firm Q's price, i.e. $R_t^{k+1} = R_t(\mu_t^k)$. This means that in order to achieve $R_t^* = R_t(\mu_t^*)$ firm P approximates μ_t^* by μ_t^k .

Nash-type Phase 1 Algorithm

Step 0: $k \leftarrow 0$; $\{\lambda_t^0\}$ and $\{\mu_t^0\}$ are given.

Step 1: Given $\underline{\lambda}^k, \underline{\mu}^k$, solve $d(\underline{\lambda}^k, \underline{\mu}^k; \underline{R}(\underline{\mu}^k))$ to obtain $(\underline{u}^k, \underline{p}^k)$.

Step 2: $\lambda_t^{k+1} = \lambda_t^k + s^k(D_t - \sum_{i=1}^I p_{it}^k u_{it}^k)$,
 $\mu_t^{k+1} = \max(0, \mu_t^k + s^k(R_t - \sum_{i=1}^I r_i(p_{it}^k)u_{it}^k)), \forall t$.

Step 3: $k \leftarrow k + 1$, go to Step 1. ■

The convergence of Nash Algorithm has not yet been established theoretically, but it converges in all observed cases.

4.2.2 Stackelberg game

As in the sequential bargaining game defined in Section 4.2 we now consider the case that firm Q knows the response function of firm P so that firm Q expects firm P's response in its revenue maximization problem. This game is commonly known as a Stackelberg game [5].

Proposition 3 If $(\hat{\underline{\lambda}}, \hat{\underline{\mu}}; \hat{\underline{u}}, \hat{\underline{p}})$ is a solution to the following problem (\hat{D}) , then $(\hat{\underline{\lambda}}, \hat{\underline{\mu}}; \underline{R}(\hat{\underline{u}}), \hat{\underline{u}}, \hat{\underline{p}})$ is a Stackelberg equilibrium of the Stackelberg game.

$$(\hat{D}) \max_{\underline{\lambda}, \underline{\mu} \geq 0} \min_{\underline{u}, \underline{x}, \underline{p}} \left(\begin{array}{l} \sum_{t=1}^T \sum_{i=1}^I [C_i(p_{it})u_{it} + S_i(x_{i,t-1}, u_{it}, u_{i,t-1})] + \\ \sum_{t=1}^T [\lambda_t(D_t - \sum_{i=1}^I p_{it}u_{it}) + \mu_t(R_t(\mu_t) - \sum_{i=1}^I r_i(p_{it})u_{it})]. \end{array} \right) \quad (13)$$

■

We assume that $R_t(\cdot)$ is continuously differentiable for all t . We can then apply the subgradient algorithm to solve (\hat{D}) to obtain a Stackelberg equilibrium.

Stackelberg-type Phase 1 Algorithm

Step 0: $k \leftarrow 0$; $\underline{\lambda}^0$ and $\underline{\mu}^0$ are given.

Step 1: Given $\underline{\lambda}^k$ and $\underline{\mu}^k$, solve $d(\underline{\lambda}^k, \underline{\mu}^k; \underline{R}(\underline{\mu}^k))$ to obtain $(\underline{u}^k, \underline{p}^k)$, for $\forall i, t$.

Step 2: $\lambda_t^{k+1} = \lambda_t^k + s^k(D_t - \sum_{i=1}^I p_{it}^k u_{it}^k)$,
 $\mu_t^{k+1} = \max(0, \mu_t^k + s^k(R_t(\mu_t^k) - \sum_{i=1}^I r_i(p_{it}^k)u_{it}^k + \mu_t^k R'_t(\mu_t^k))), \forall t$.

Step 3: $k \leftarrow k + 1$, go to Step 1. ■

(Note that the objective of (\hat{D}) is not necessarily concave because $\sum_{t=1}^T \mu_t R'_t(\mu_t)$ may not be concave.)

The feasibility algorithm for the case with flexible SRR is basically the same as the Phase 2 algorithm presented in Section 4.1 with the fixed SRR R_t replaced by the flexible one $R_t(\cdot)$, as a function of appropriate μ_t . For simplicity, we will not restate the Phase 2 algorithm here. After Phase 2, a feasible schedule corresponding to a SRR will be obtained. The SRR determined from the final iteration of Phase 2 can therefore be regarded as the system SRR. A unit decommitment method can then be applied to improve the solution quality with this system SRR fixed.

4.3 Discussion

Let L be the Lagrangian of the unit commitment problem (P) :

$$L(\underline{x}, \underline{u}, \underline{p}; \underline{\lambda}, \underline{\mu}, \underline{R}) \equiv \sum_{t=1}^T \sum_{i=1}^I [C_i(p_{it})u_{it} + S_i(x_{i,t-1}, u_{it}, u_{i,t-1})] + \sum_{t=1}^T [\lambda_t(D_t - \sum_{i=1}^I p_{it}u_{it}) + \mu_t(R_t - \sum_{i=1}^I r_i(p_{it})u_{it})]. \quad (14)$$

Suppose $0.05D_t = R_t^{\min} \leq R_t(\mu_t) \leq R_t^{\max} = 0.07D_t$ for all $\mu_t \geq 0, \forall t$, and $(\underline{\lambda}^*, \underline{\mu}^*)$ and $(\hat{\underline{\lambda}}, \hat{\underline{\mu}})$ solve (D^*) and (\hat{D}) respectively. We have

$$\max_{\underline{\lambda}, \underline{\mu} \geq 0} \min_{\underline{x}, \underline{u}, \underline{p}} L(\underline{x}, \underline{u}, \underline{p}; \underline{\lambda}, \underline{\mu}, \underline{R}^{\min}) \quad (15)$$

$$\leq (D^*) \max_{\underline{\lambda}, \underline{\mu} \geq 0} \min_{\underline{x}, \underline{u}, \underline{p}} L(\underline{x}, \underline{u}, \underline{p}; \underline{\lambda}, \underline{\mu}, \underline{R}(\underline{\mu}^*)) \quad (16)$$

$$\leq (\hat{D}) \max_{\underline{\lambda}, \underline{\mu} \geq 0} \min_{\underline{x}, \underline{u}, \underline{p}} L(\underline{x}, \underline{u}, \underline{p}; \underline{\lambda}, \underline{\mu}, \underline{R}(\underline{\mu})) \quad (17)$$

$$\leq \max_{\underline{\lambda}, \underline{\mu} \geq 0} \min_{\underline{x}, \underline{u}, \underline{p}} L(\underline{x}, \underline{u}, \underline{p}; \underline{\lambda}, \underline{\mu}, \underline{R}(\hat{\underline{\mu}})) \quad (18)$$

$$\leq \max_{\underline{\lambda}, \underline{\mu} \geq 0} \min_{\underline{x}, \underline{u}, \underline{p}} L(\underline{x}, \underline{u}, \underline{p}; \underline{\lambda}, \underline{\mu}, \underline{R}^{\max}). \quad (19)$$

To see the inequality between (16) and (17), note that the optimal solution $(\underline{\lambda}^*, \underline{\mu}^*)$ of (D^*) is feasible to (\hat{D}) . This shows that the revenue of the leader (firm Q) in the Stackelberg game exceeds that in the sequential bargaining game defined in Section

4.2. This is because in the Stackelberg game firm Q has more information about firm P than in the Sequential bargaining game.

Both the Nash algorithm and the Stackelberg algorithm can be applied to obtain a *price-based adaptive* SRR. For example, if we solve (\hat{D}) and obtain $(\hat{\lambda}, \hat{\mu})$, we can use $\underline{R}(\hat{\mu})$ as SRR to define a unit commitment (\bar{P}) as below.

$$(\bar{P}) \min_{\underline{x}, \underline{u}, \underline{p}} \quad \sum_{t=1}^T \sum_{i=1}^I [C_i(p_{it})u_{it} + S_i(x_{i,t-1}, u_{it}, u_{i,t-1})]$$

$$\text{s.t.} \quad \sum_{i=1}^I p_{it}u_{it} = D_t; \quad \sum_{i=1}^I r_i(p_{it})u_{it} \geq R_t(\hat{\mu}_t), \forall t.$$

The corresponding dual problem (\bar{D}) of (\bar{P}) is as follows.

$$(\bar{D}) \max_{\underline{\lambda}, \underline{\mu} \geq 0} \min_{\underline{x}, \underline{u}, \underline{p}} L(\underline{x}, \underline{u}, \underline{p}; \underline{\lambda}, \underline{\mu}, \underline{R}(\hat{\mu})) \quad (20)$$

Without really solving (\bar{D}) , we approximate the duality gap between (\bar{P}) and (\bar{D}) by the ‘duality’ gap between (\bar{P}) and (\hat{D}) . Note that this approximation is more restrictive (with a larger value) than the value of the actual duality gap. In our experiments, the ‘duality’ gap between (\hat{D}) and (\bar{P}) is within 1.5% for 10-unit-168-hour cases, and within 0.3% for 30-unit-168-hour cases. The real duality gaps between (\bar{P}) and (\bar{D}) for both cases are actually smaller.

5 Numerical results

The algorithms are implemented in FORTRAN on an HP 700 workstation. A 30-unit thermal model problem over a one week planning horizon is tested. The total system capacity is 15,515 MW which is much higher than the peak load. We apply the three-phase algorithm to solve the unit commitment problem. In this test problem, we let the interval of SSR $[a_t D_t, b_t D_t]$ be $[0.05 D_t, 0.07 D_t]$, for all t . The conventional fixed SRR method ($R_t = 0.07 D_t$, for all t) is compared with the adaptive SRR method. We also have tested both Nash and Stackelberg Algorithms in the Phase 1 in the adaptive SRR case. The response function used in this test problem has the form:

$$R_t(\mu_t) = 0.06 + 0.01 \tanh(-4(\mu_t - 0.5)), \forall t. \quad (21)$$

The algorithm performances are summarized in Table 1.

Both adaptive SRR algorithms have lower total generating cost due to the relaxation of SRR, and achieve better solutions in terms of the duality gap. Also the Stackelberg model outperforms the sequential bargaining model (Nash Algorithm) in terms of cost saving because of having more information as explained in Section 4.

The system spinning capacity profiles obtained by fixed SRR and adaptive SRR (Stackelberg model) methods are depicted in Figure 3, in which only one day is shown. The corresponding data can be found in Tables 2 and 3. In Table 2 the multipliers μ_t corresponding to fixed (7%) SRR in selected hours are listed. The value of μ_t in an hour reflects the shadow price of the SRR in the hour. Note that the value of μ in hour 12 is much higher than those of μ_t in other hours. In Table 3, the proposed adaptive SRR is applied to the same test problem. It can be seen that the SRR in an hour responds to the corresponding μ_t based on the response function (21).

In Figure 3 it can be seen at hour 12, the SRR has been relaxed down to 5% of the load and yields an actual reserve of 5.8% of the load. Slight relaxation of the SRR at hour 12 affects the commitment in the following hours (due to minimum uptime or down time constraints). In Figure 3 it can be seen that during the period between hours 15 and 19, a commitment with adequate but more economic spinning reserve is achieved with adaptive SRR. At the same time higher spinning reserve which increases reliability is maintained when it is inexpensive.

6 Conclusion

In this paper we have interpreted the Lagrangian relaxation method for solving the unit commitment as a two-player game: one player chooses unit commitment to minimize cost based on prices; the other adjusts prices to maximize revenue. The optimum solution of the Lagrangian relaxation method is shown to be a Nash equilibrium of this game. We have also shown that the sub-

Table 1: Comparison of methods

methods	total cost (\$)	CPU time (sec.)			Duality Gap (%)
		Ph. 1	Ph. 2	Ph. 3	
Fixed SRR*	9333747	11.53	10.1	0.13	0.70
Adp. SRR1 [†]	9296353	10.17	7.64	0.29	0.40
Adp. SRR2 [‡]	9291727	11.56	7.22	0.12	0.35

*Fixed SRR: $7\% \times \text{Load}$.

[†]Adp. SRR 1: Nash Algorithm in Phase 1.

[‡]Adp. SRR 2: Stackelberg Algorithm in Phase 1.

gradient rule captures the responses of the players. Along this interpretation, the game model can include other system parameters as decision variables to the game. For example, ‘soft’ spinning reserve requirements are made adaptive and respond to a price signal according to a nonincreasing response function at each iteration in the dual optimization. The numerical test results show that this method avoids uneconomic unit commitment solutions while enhancing system security. This approach can yield both cost savings and improved algorithm performance. In the context of deregulation, we believe that scheduling coordinators such as the Power Exchange who have the option of self-providing spinning reserves will find an adaptive representation of their reserve requirements to be the appropriate one in finding their most profitable reserve levels.

7 Acknowledgment

This work was partly supported by the National Science Foundation under Grant IRI-9120074 and PG&E R&D Department. Their support is greatly appreciated.

References

- [1] M. S. Bazaraa and C. M. Shetty, *Nonlinear Programming - Theory and Algorithms*, John Wiley & Sons Inc., New York, 1979.
- [2] D. P. Bertsekas, G. S. Lauer, N. R. Sandell, Jr., and T. A. Posbergh, “Optimal short-term scheduling of large-scale power systems,” *IEEE Trans. Automatic Control*, vol. AC-28, no. 1, pp. 1-11, 1983.
- [3] A. Cohen and V. Sherkat, “Optimization-based methods for operations scheduling,” *Proceedings of IEEE*, vol. 75, no. 12, pp. 1574-1591, 1987.
- [4] L. A. F. M. Ferreira, T. Andersson, C. F. Imparato, T. E. Miller, C. K. Pang, A. Svoboda, and A. F. Vojdani, “Short-term resource scheduling in multi-area hydrothermal power systems,” *Electrical Power & Energy Systems*, vol. 11, no. 3, 1989.
- [5] R. Gibbons, *Game theory for applied economists*, Princeton University Press, Princeton, NJ, 1992.

- [6] X. Guan, P. B. Luh, and B. Prasannan, "Power system scheduling with fuzzy reserve requirements", *IEEE Trans. Power Systems*, vol.11, no.2, pp. 864-9, May 1996.
- [7] X. Guan, P. B. Luh, H. Yen, and P. Rogan, "An optimization-based method for unit commitment," *Electrical Power & Energy Systems*, vol. 14, no. 1, pp. 9-17, February 1992.
- [8] B. T. Polyak, "Minimization of unsmooth functionals," *USSR Comput. Math. Math. Phys.*, vol. 9, pp 14-29, 1969.
- [9] A. J. Svoboda, "Simulation of dispatchable demand-side management in electric power system operations planning", Ph.D. Thesis, Department of Industrial Engineering and Operations Research, University of California at Berkeley, Nov. 1992.
- [10] A. J. Svoboda and S. S. Oren, "Integrating price-based resources in short-term scheduling of electric power systems", *IEEE Trans. Energy Conversion*, vol. 9, no. 4, pp. 760-9, Dec. 1994.
- [11] A. J. Svoboda, C. L. Tseng, C. A. Li, and R. B. Johnson, "Short term resource scheduling with ramp constraints", *IEEE Trans. Power Systems*, vol.12, no.1, pp. 77-83, Feb 1997.
- [12] C. L. Tseng, S. S. Oren, A. J. Svoboda, and R. B. Johnson, "A Unit Decommitment Method in Power System Scheduling", *Electrical Power & Energy Systems*, vol. 19, no. 6, pp. 357-365, Aug. 1997.
- [13] C.L. Tseng, "On Power System Generation Unit Commitment Problems", Ph.D. Thesis, Department of Industry Engineering and Operations Research, University of California at Berkeley, Dec. 1996.
- [14] C.L. Tseng, S.S. Oren, C.S. Cheng, C.A. Li, A.J. Svoboda, and R.B. Johnson, "A Transmission-Constrained Unit Commitment Method in Power System Scheduling", to appear in *Decision Support Systems*.
- [15] F. Zhuang and F. D. Galiana, "Towards a more rigorous and practical unit commitment by Lagrangian relaxation," *IEEE Trans. Power Systems*, vol. PWRS-3, no. 2, pp. 763-770, 1988.

Table 2: μ_t of selected hours (fixed SRR)

hour	2	4	6	8	10	12
μ_t	0	0	0	0.35	0.595	1.724
SRR(%)	7.0	7.0	7.0	7.0	7.0	7.0
Load(MW)	2530	2350	3400	6400	7850	8720
SSC(MW) [†]	5045	5045	5045	6855	9225	9825
reserve(%) [‡]	99.4	114.6	48.4	7.1	17.5	12.6
hour	14	16	18	20	22	24
μ_t	0.437	0	0.892	0.523	0	0
SRR(%)	7.0	7.0	7.0	7.0	7.0	7.0
Load(MW)	7650	6550	8200	7700	4300	2400
SSC(MW)	9225	9225	9225	9225	5295	4920
reserve(%)	20.5	40.8	12.5	19.8	23.1	105

[†]SSC: System Spinning Capacity

[‡]reserve(%)=100×(SSC - Load)/Load

Table 3: μ_t of selected hours (Adaptive SRR)

hour	2	4	6	8	10	12
μ_t	0	0	0	0	0.469	1.281
SRR(%)	7.0	7.0	7.0	7.0	6.1	5.0
Load(MW)	2530	2350	3400	6400	7850	8720
SSC(MW)	4920	4920	4920	6855	9225	9225
reserve(%)	94.4	109.3	44.7	7.1	17.5	5.8
hour	14	16	18	20	22	24
μ_t	0.317	0	0.788	0.375	0	0
SRR(%)	6.5	7.0	5.3	6.4	7.0	7.0
Load(MW)	7650	6550	8200	7700	4300	2400
SSC(MW)	9225	8225	8825	8225	5295	4920
reserve(%)	20.5	25.5	7.6	6.8	23.1	105

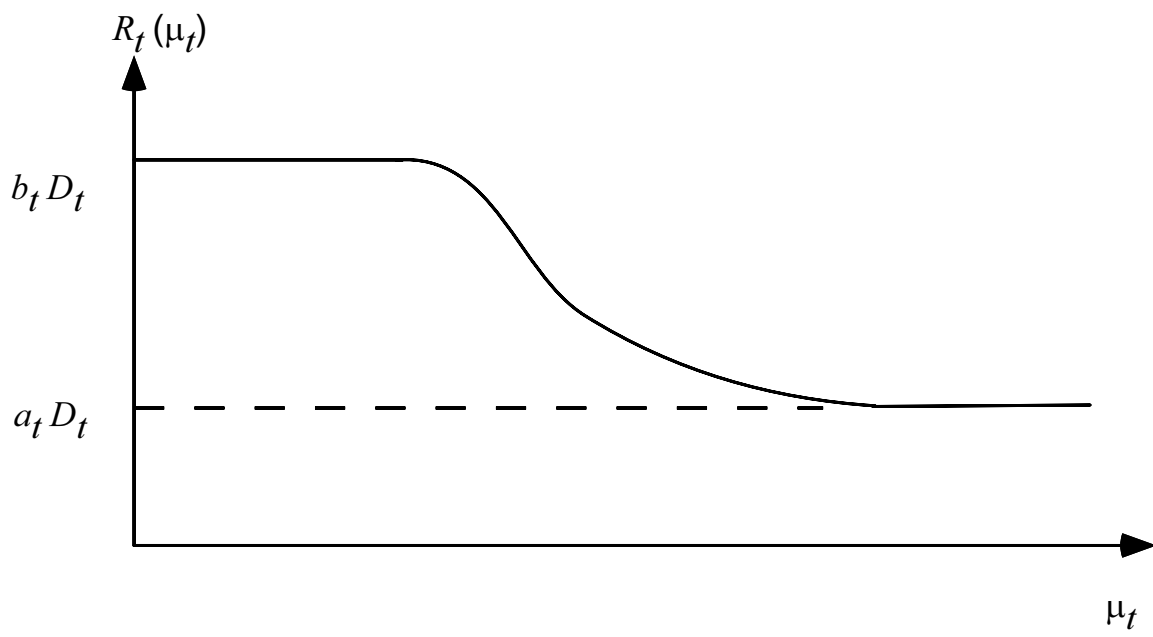


Figure 2: An example of $R_t(\mu_t)$.

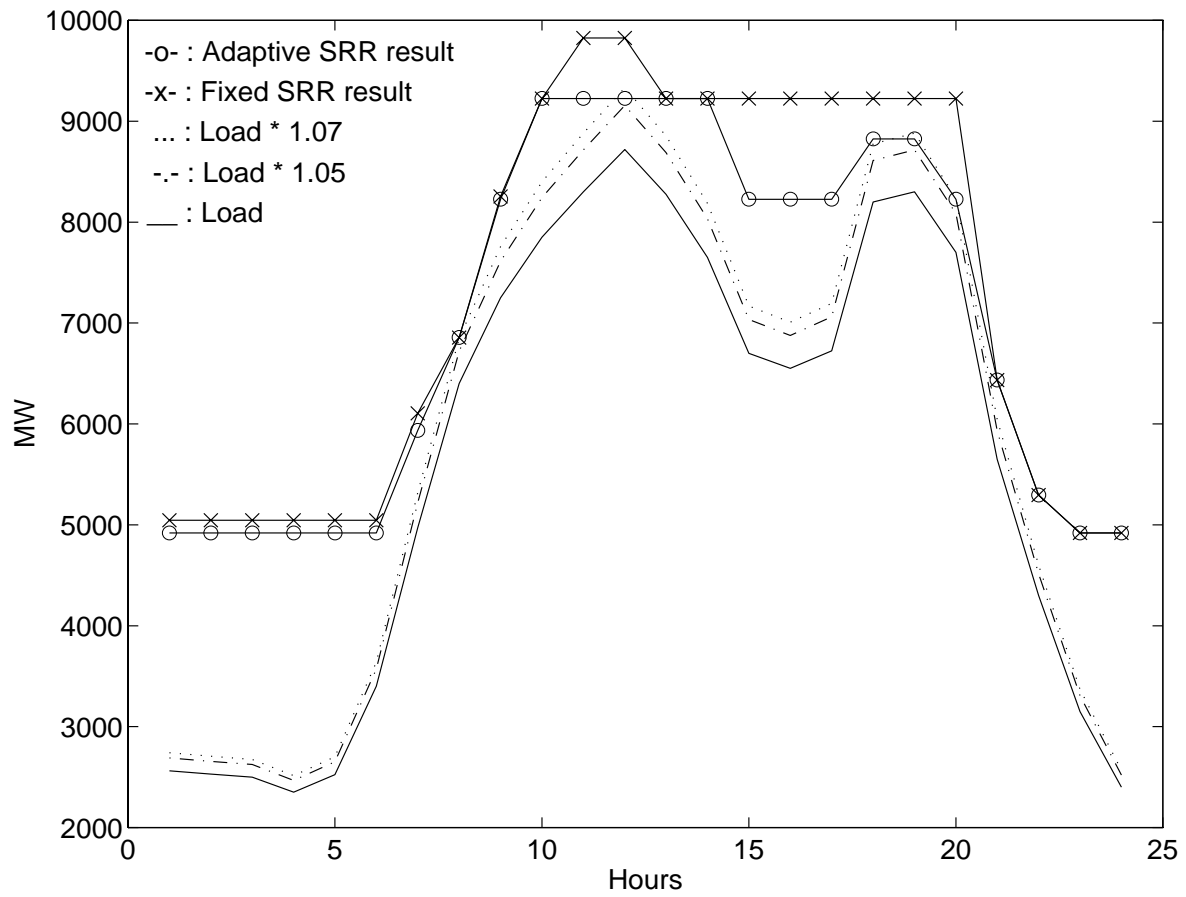


Figure 3: System spinning capacities and SRR.